

WELL SUCCESSFULLY REGENERATED OWED TO FILTER GLASS BEADS

Good news for the Feucht municipal utility works: After the regeneration of their drinking water well, the well's capacity reaches almost 100 % again.

Since 2010 the well in Feucht has been running trouble-free with SiLibeads® filter glass beads instead of filter gravel. Nine years later, however, the first regeneration of the well was due. The local well specialist company, H. Anger's Söhne, was entrusted with the job. After the camera inspection, the mechanical cleaning was carried out by using brushes and pistons and the simultaneous pumping out by means of an air lift pump. The annular space and filter tubes could be cleaned without residue. Without much trouble, stainless steel wire filters and glass beads are shiny and clean again. The plant manager of the Feucht municipal utility works confirmed very good final results. A Packer-flowmeter measuring showed that the well output reached almost 100% again. When well was built in 2010 by a well local construction company, 12 mm SiLiBeads® glass beads were used for the annular space bulk filling. The well depth is 240 m, constructed in DN 400. Filling the glass beads into the annular space was trouble-free, since dust-free filling facilitated the installation. It was already apparent during the first camera inspections that no clogging of the filter slots had occurred. The advantages of SiLibeads® glass beads in well regeneration are the good visibility of the annular space in wound wire filters and the fast and trouble-free regeneration due to the very smooth surface of the glass beads.



Image 1: Well in Feucht

Significant financial savings result from the shorter regeneration times and the extension of the regeneration intervals.

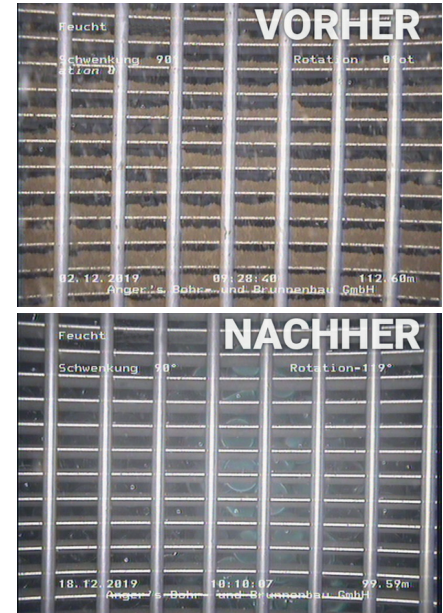


Image 2: a) before, b) after

Contact: Sigmund Lindner GmbH, Warmensteinach, Wolfgang Voit, Tel. 09277 994 53, wvoit@sili.eu, www.sili.eu